

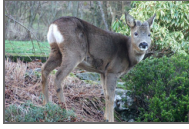


What's Been Seen at Bestwood Country Park!



WHAT

Roe Deer.



Water Vole.



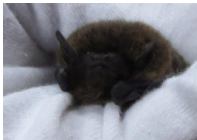
Kingfisher.



White Clawed Crayfish.



Many species of bats.



WHERE

Many different areas in the park.

Mill Lakes.

Mill Lakes.

Mill Lakes at the river Leen.

Main site and Mill Lakes.

WHEN

Spring/Summer.

Family seen over Summer.

Throughout Summer, most recently, early December.

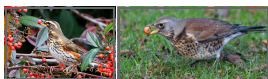
Late Summer/Autumn.

Spring/Summer/Autumn.

What to Look Out For This Autumn/Winter!



Jay birds searching for acorns.



Winter thrushes, Redwing & Fieldfare visiting from the North.



Visiting Waxwings.



Winter moths (dancing in front of lights).



Snowdrops emerging.

Your wildlife sightings are always welcome. Please pass on information about wildlife you see on the park to:

sue.mcdonald@nottscc.gov.uk

0115 9753782